

An aerial photograph showing a vast, dense forest landscape. A winding river flows through the center, with several lakes of varying sizes scattered throughout. The terrain is mostly flat with some low hills. The sky is clear and blue. The text 'Latva-Kouvanjärvi' is overlaid in the upper left corner.

# Latva-Kouvanjärvi

KOUVAN VESISTÖ ILMASTA  
Kuvat: Martti Kaikkonen  
© : Livojoki ry

Kouvanjärvi pohjoissuunnasta



# Kouvanjokisuu



Syrjälä



An aerial photograph of a dense forest with a river winding through it. The trees are mostly green, with some yellowish-green patches. The river is dark and narrow. The text 'Sivakkakoski' is overlaid in white in the upper left quadrant.

Sivakkakoski

# Sivakkakoski

Kuva: Toivo Kiminki





Ruostesuo

Kohti Kortejärveä





Kortejärvi



Kortejärvi



Kortejärvi pohjoisesta



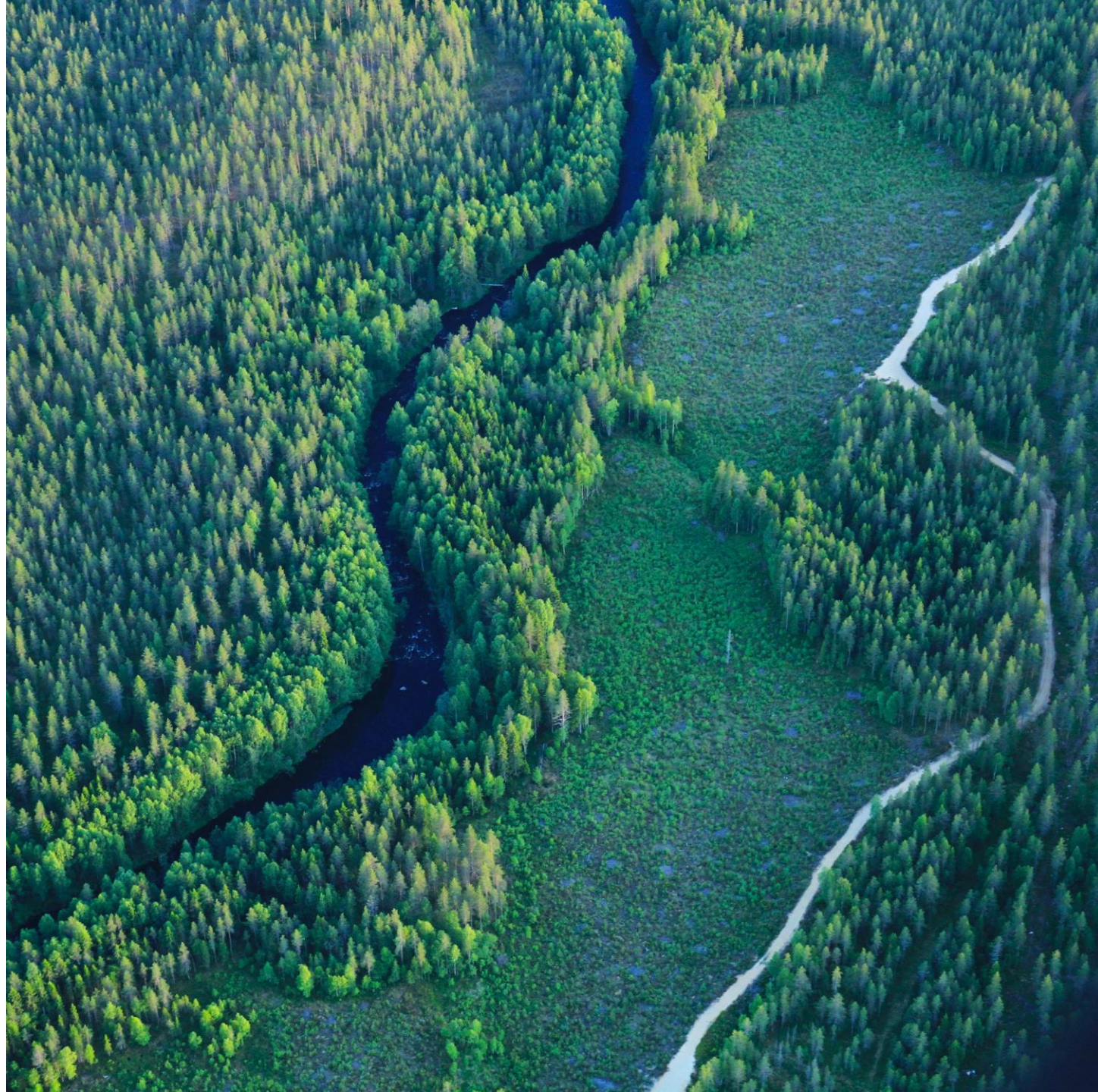
Myllykoski



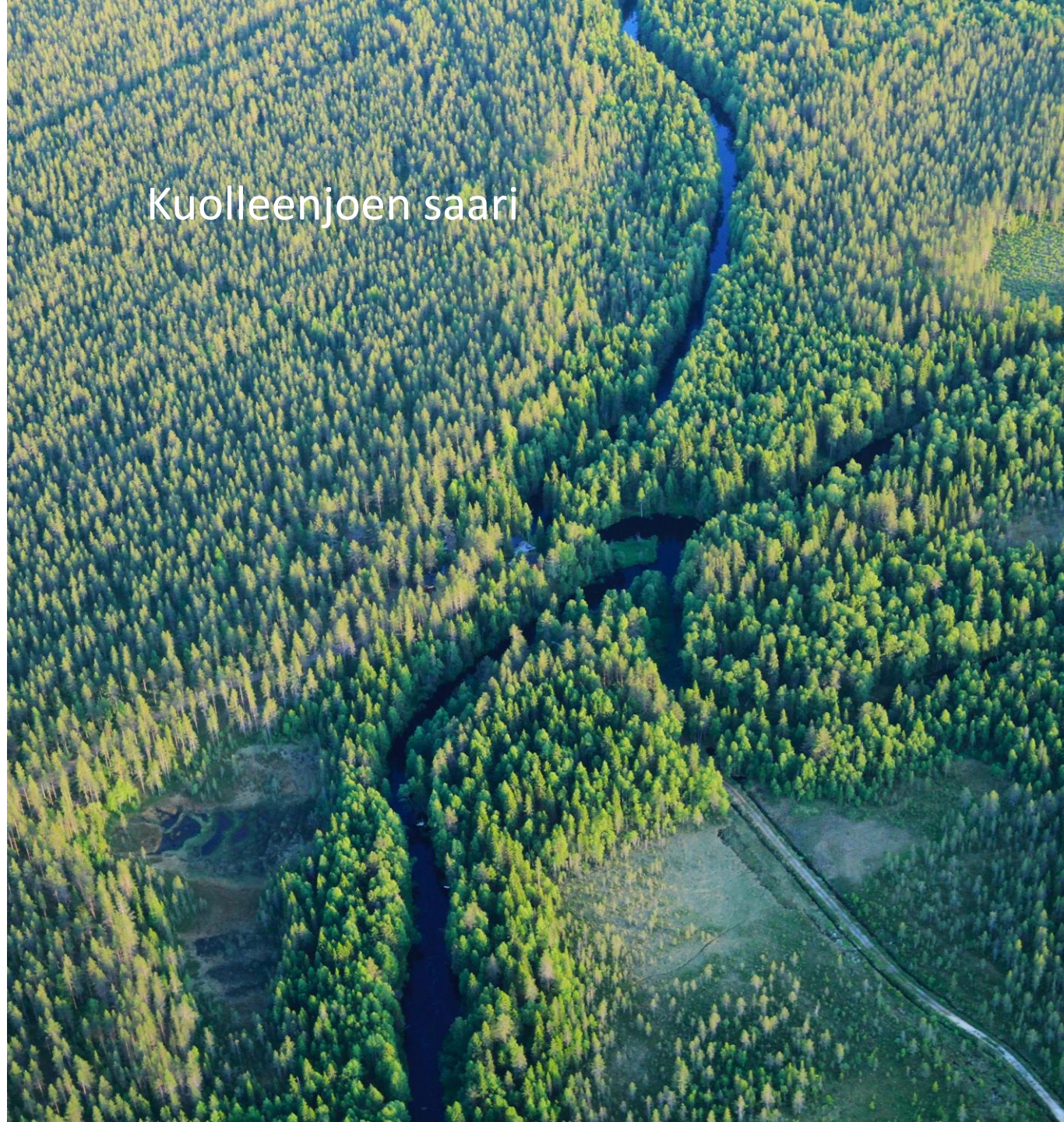
An aerial photograph showing a dense forest of green trees. A dark blue river winds through the forest, curving from the top center towards the bottom right. In the middle-left section, there is a large, irregularly shaped area where the forest has been cleared, revealing a lighter green, grassy or brushy ground. The lighting suggests a bright day, with some shadows cast across the forest canopy.

Hetepuro

Jäkälävaara  
a



Kuolleenoen saari









An aerial photograph of a vast, dense forest. A dark, winding river flows through the center of the forest, creating a meandering path. The trees are a mix of green and yellowish-green, suggesting a mix of deciduous and coniferous species. The lighting is bright, casting shadows that emphasize the texture of the forest canopy. The word "Talvikoski" is overlaid in white text in the upper left quadrant of the image.

Talvikoski



Pitkäkoski



An aerial photograph of a vast, dense forest. The trees are a mix of green and yellow-green, suggesting a mix of deciduous and coniferous species. A winding road, likely a dirt or gravel road, curves through the forest from the top right towards the bottom right. A stream or small river flows through the forest, following a similar path to the road. The lighting is bright, creating strong shadows and highlights on the forest canopy.

Pitkääkoski

Jokela



An aerial photograph showing a dense forest of tall, thin trees, likely spruce or pine, in shades of green and yellow. A river or stream flows through the center of the forest, winding from the top towards the bottom. To the left of the river, there are several rectangular green fields, some of which appear to be agricultural. A few small buildings with red roofs are visible near the top left and along the riverbank. The overall scene is a mix of natural forest and managed agricultural land.

Jukuankoski

Joentauskoski











Livojoki

